

Rental Program

Rent from the Manufacturer

with up-to-date **Factory Calibrations** and significant **Rebates** toward equipment purchase

1-800-218-7997

AdvancedSense TVOC Multi-Gas PID Monitoring Kits

Weekly Rental Rate: **\$425** Monthly Rental Rate: **\$1125**

INCLUDES:

TG-502L* Probe, with ppb range PID sensor installed, for VOC, Temperature and %RH measurement (note: for higher range VOC measurements, specify the TG-502H* with ppm range PID installed)

AdvancedSense datalogger (with differential and barometric pressure sensors installed)

WolfSense PC data download, graphing and analysis software

WolfSense ARG Advanced Report Generator software

PCC-AS01 instrument pouch with belt clip and detachable neck strap

PCC-05IQ probe pouch with shoulder strap for hands-free, walk-through surveys

PCC-10 Hard-shell Security Case for in-situ monitoring



AdvancedSense with TG-502 probe

SENSORS

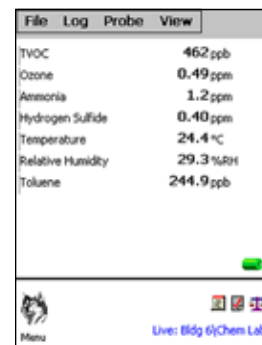
	WEEKLY	MONTHLY
NO₂, SO₂, NO, NH₃, O₂, H₂S, CO, or O₃ (each).....	\$145	\$200
Cl₂, HCl, HCN or H₂S/CO combo (each)	\$170	\$250

*Up to 3 additional electrochemical gas sensors may be installed into the TG-501 probe. Specific sensor availability is limited, inquire regarding availability.

OPTIONS

IQ-410 Probe with CO ₂ , CO, %RH and temperature sensors	\$265	\$725
IQ-610 Probe with ppb VOC, CO ₂ , CO, %RH, °C/°F plus 1 gas slot.....	\$325	\$995
TG-501 Gas Sensor Probe (not including gas sensors;..... up to 5 may be installed)	\$200	\$475
AS-201 Telescoping Hotwire Air Velocity probe	\$100	\$275
WolfPack Modular Area Monitor added (and PCC-16 case substituted).....	\$300	\$900
FM-801-KIT Formaldehyde meter, AdvancedSense interface cable,..... case; HCHO sensor cartridges not included (must be purchased)	\$150	\$375
PC-GW6A-KIT 6-channel Particle Counter displays counts and µg/m ³	\$425	\$1125
for 6 size ranges; Comes with AS interface cable, hardshell case		
PM-205-KIT Thermo Particle Concentration meter with red & blue	\$595	\$1650
cyclones, AdvancedSense interface cable, soft case		
AD-L7F-USB Camera/USB key download cable (AdvancedSense/WP).....	\$10	\$25
PCC-15 dual probe case upgrade (replaces PCC-10)	\$50	\$125
ACC-APUMP1 Battery powered air pump with belt clip for drawing	\$25	\$75
samples across probe (use together with CA-HD2)		
CA-HD2** Gas calibration hood	\$10	\$25
ACC-REG1 Regulator & 2 cylinder hard-shell case.....	\$15	\$45

** (No gases included; reference gas cylinders are available for sale, not rental)



AdvancedSense display in live mode (select ppb, ppm, µg/m³, or other units)



PM-205
Particulate meter



CA-GS25L/H gas cal kit



PCC-10 hardshell case is included with rental for transport and for secure trend logging



AdvancedSense with display in graph mode

GRAYWOLF SENSING SOLUTIONS

Advanced Environmental Instrumentation

6 Research Dr., Shelton, CT 06484 USA • Tel: 1-203-402-0477 • Fax: 1-203-402-0478 • e-mail: Salesteam@GrayWolfSensing.com

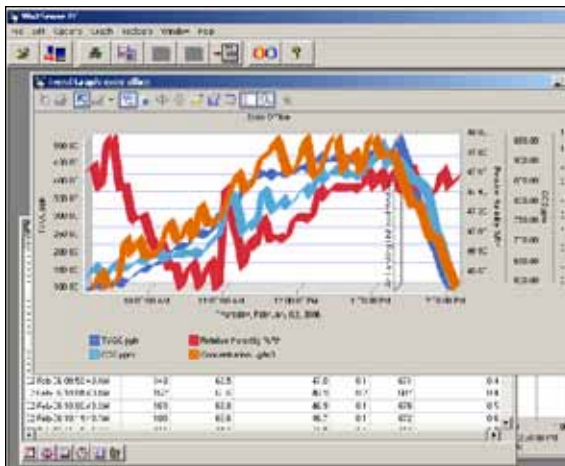
www.GrayWolfSensing.com

May 2013

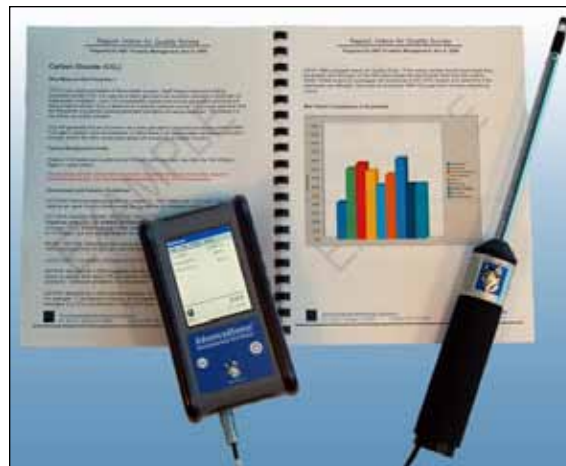
Rental Program



Rental includes instrument pouch and probe pouch(es) for hands-free walk-thru surveys



WolfSense PC data transfer software



WolfSense ARG report

WolfSense PC software allows logged data to be down-loaded to your PC for review, graph generation, cut & paste reporting and/or simple export to Excel

WolfSense ARG Advanced Report Generator

A Template Design Wizard walks the user through report set-up:

- Define how to display measured data (Toxic gases, %RH, Temperature, VOCs, etc).
- Select from a list of government and industry guidelines to include for each parameter.
- Choose from and edit canned text blocks with general IAQ background info.
- Automatically insert notes taken in the field on the AdvancedSense; text, drawings, photos.
- Create and insert graphs with comments, alarm/guideline lines.
- Add equipment descriptions/specs/photos, probe calibration info, company information/logos and much more

REBATE UPON PURCHASE

Want to buy the equipment that you've rented? Purchase the kit that's been shipped to you and apply 75% of the rental price that you paid (up to a maximum of 75% of the total purchase price) toward the purchase price. In some cases, dependent on the condition of the equipment shipped to you, a "demo/rental equipment discount" may also be available.

Want to send the kit back and order a brand new unit? As long as you order within 6 months from the date that you return your rental kit you can apply 35% of the rental price that you paid...(up to a maximum of 50% of the total purchase price) toward your purchase.

Security Deposit: Rentals may require a (refundable) security deposit (covering the value of the rental equipment), if appropriate credit terms have not been previously established and maintained with GrayWolf. Allow 10 business days from the time that you supply adequate credit references for a new open account to be set up.

GrayWolf Sensing Solutions cannot guarantee the availability of rental equipment. The quoted rental pricing is exclusively available to clients in the USA and Canada, and is subject to change. Contact your local distributor for rental pricing and availability in other countries.



Optional PCC-15 dual probe case (shown with FM-801 and PM-205)



Optional WolfPack area monitor

GRAYWOLF SENSING SOLUTIONS

Advanced Environmental Instrumentation

6 Research Dr., Shelton, CT 06484 USA • Tel: 1-203-402-0477 • Fax: 1-203-402-0478 • e-mail: Salesteam@GrayWolfSensing.com

www.GrayWolfSensing.com